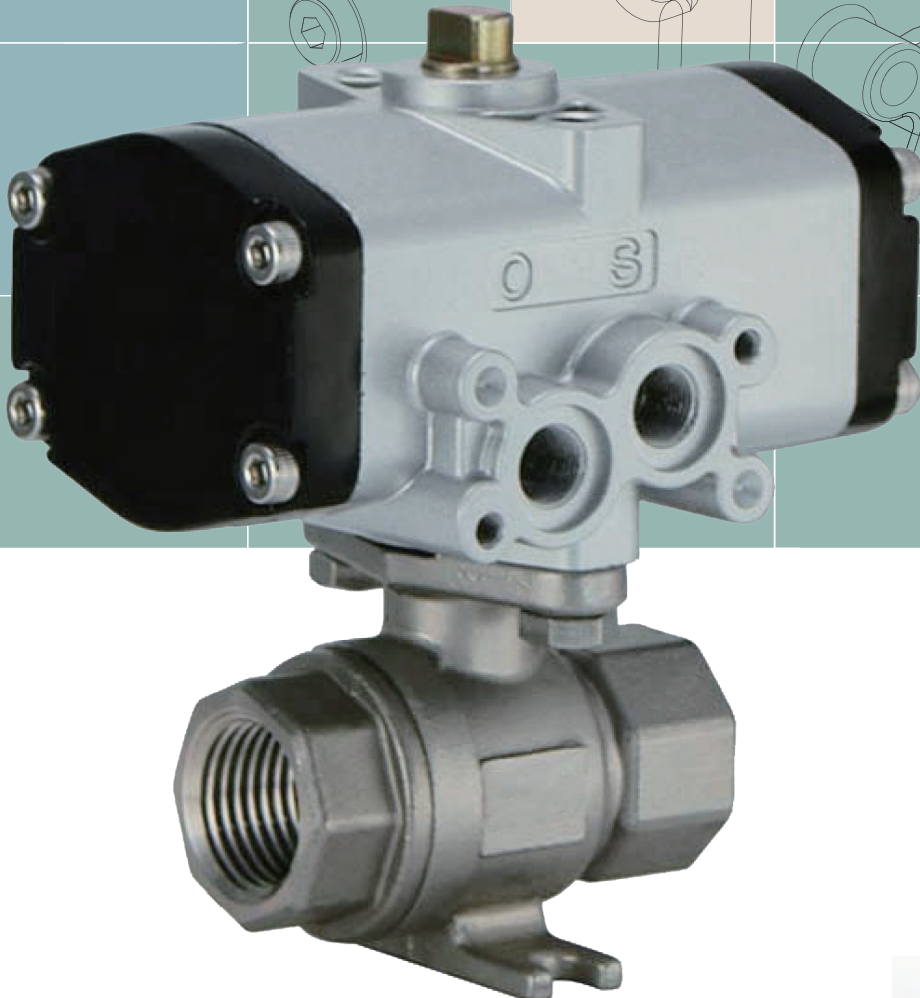


HANTS®

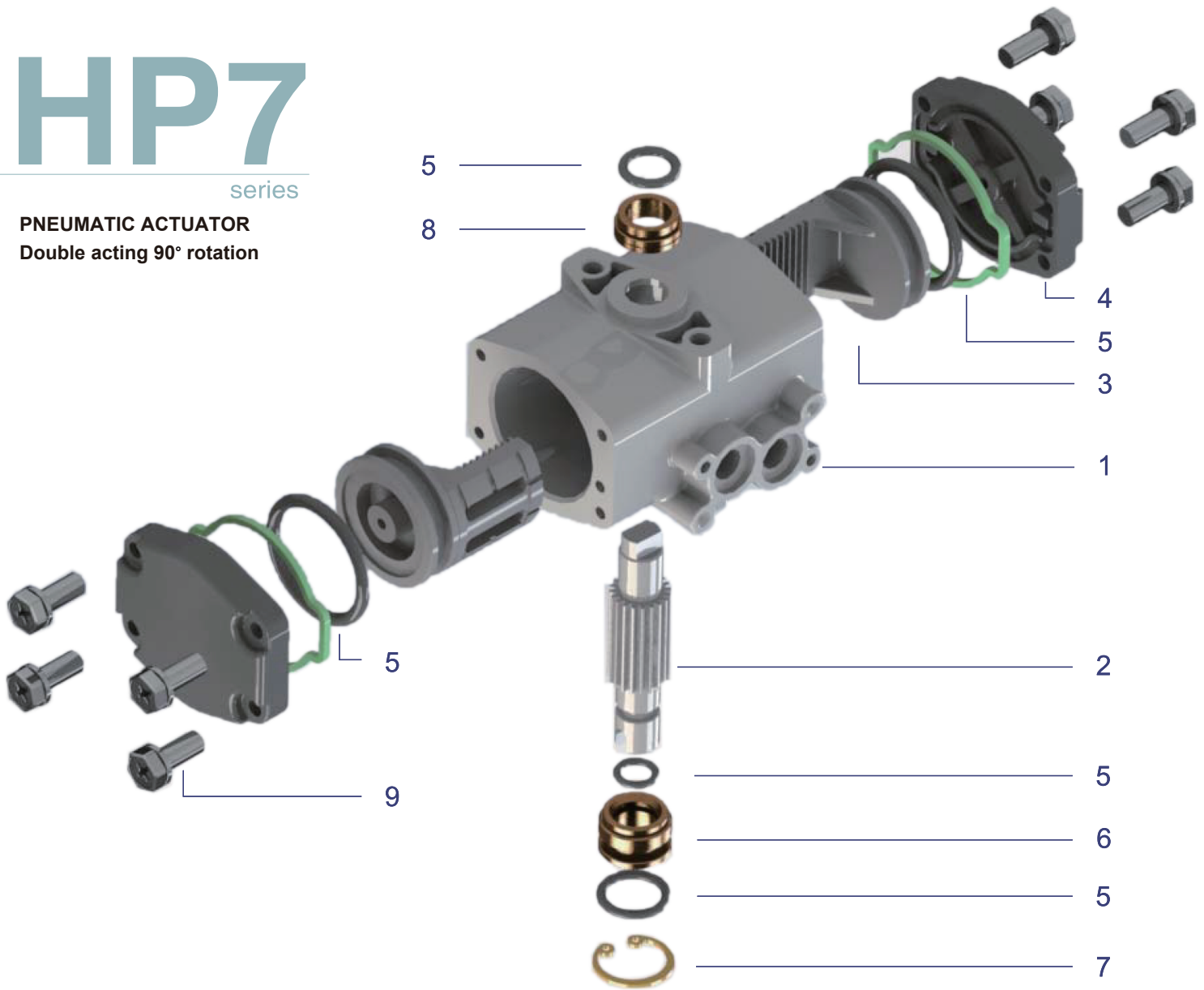
PNEUMATIC BALL VALVE



HP7

series

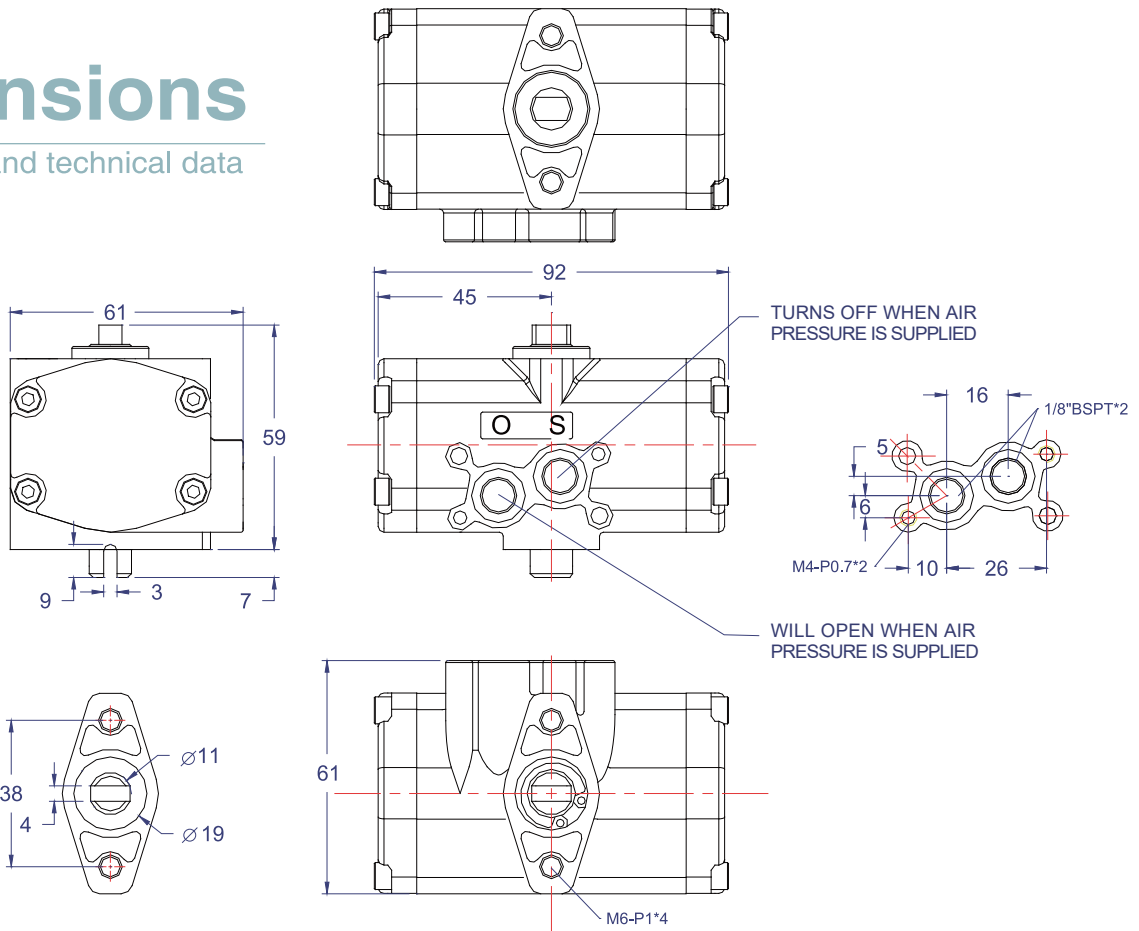
PNEUMATIC ACTUATOR
Double acting 90° rotation



PART	PART DESCRIPTION	UNIT Q.TY	STANDARD MATERIAL
1	BODY	1	EXTRUDED ALUMINUM ALLOY
2	DRIVE SHAFT	1	FREE-CUTTING STEEL
3	PISTONS	2	EXTRUDED ALUMINUM ALLOY
4	END CAP	2	EXTRUDED ALUMINUM ALLOY
5	O-RING	5	NBR
6	BEARING	2	BRONZE
7	RETAINING RING	1	SPRING STEELS
8	BEARING	1	BRONZE
9	CAP SCREW	8	STAINLESS STEEL

Dimensions

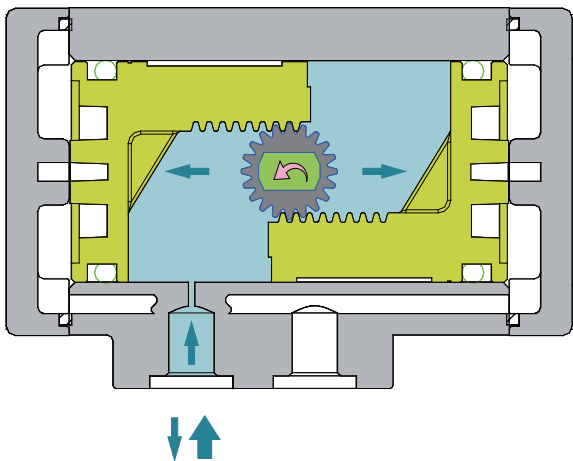
and technical data



Specifications	
OPERATING MEDIUM	INSTRUMENTATION AIR
STANDARD OPERATING PRESSURE	0.39MPA (4KGF/CM2OR 60PSI)
OPERATING PRESSURE RANGE	0.39~0.69MPA (4~7KGF/CM2OR 60~100PSI)
OUTPUT TORQUE N.M (KGF.CM)	3.9 (40)
OPERATING ANGLE	90°(±5°)
CYLINDER VOLUME	50 C.C
SERVICE CONDITION	GENERAL PURPOSE

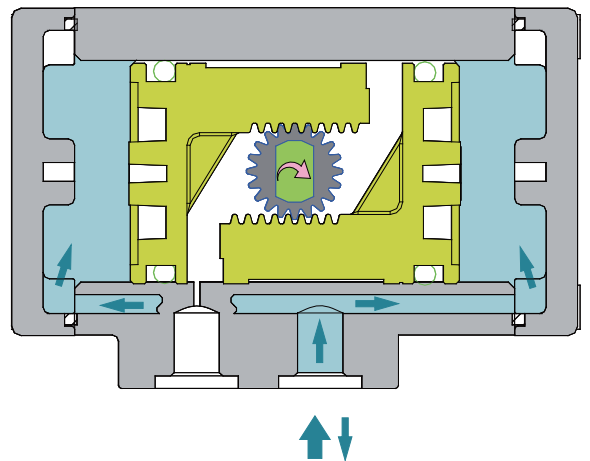
Double acting 90° rotation

OPEN



Air is pumped through "O" hole to accumulate in the chamber that forced the pistons apart and the drive shaft turns clockwise to open valve.

CLOSE



When air is pumped through "S" hole, air goes into the chamber by the guiding route that forced the pistons closer and the drive shaft turns counterclockwise to close valve.

2ST

HP7 series

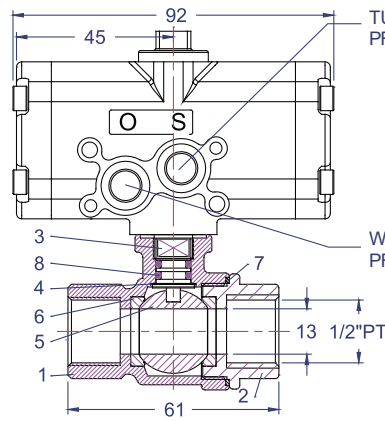
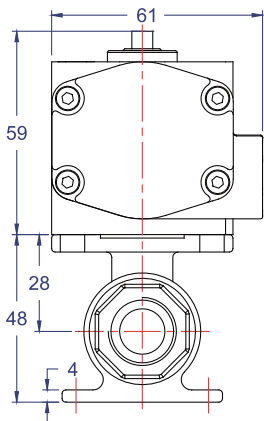
Pneumatic Valve Double-Acting

Applicative units for: Water treatment, AIR, HVAC, blower...etc.

Working Pressure : 142 Psi / 0.98Mpa (8~10kgf/cm²)

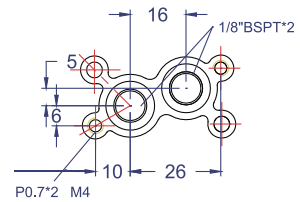
Working Temp.: 5°C ~ 45°C

Connection: 1/2"~1-1/2" Theraded end



URNS OFF WHEN AIR PRESSURE IS SUPPLIED

WILL OPEN WHEN AIR PRESSURE IS SUPPLIED



ITEM	PARTS	MATERIAL
1	BODY	CF8M
2	BODY CAP	CF8M
3	STEM	CF8M
4	THRUST	TEFLON
5	BALL	SS316
6	SEAT	TEFLON
7	GASKET	TEFLON
8	O-RING	NBR